

PTAB1050: QSG

03/08/2013

10.1" Internet Tablet
Bluetooth + Dual Cameras
PTAB1050


Connecting to Wi-Fi & downloading apps

Setting up Wi-Fi
To browse web sites, use e-mail and download apps, you must first connect the tablet to the internet.

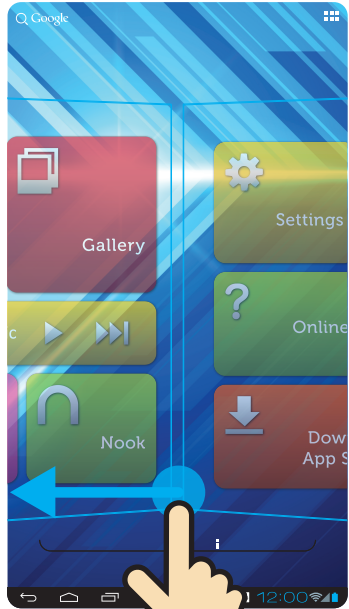
To set up Wi-Fi, use the "Polaroid Settings" widget on the Home screen.

1. Swipe the Home screen to the left to access the Polaroid Settings widget.
2. Select "Wi-Fi Setup".
3. Select a network.
4. If required, enter the correct password and select "Connect".
5. When the tablet is connected to a network, the Wi-Fi icon will appear on the Status Bar and "Connected" will appear under the selected network.

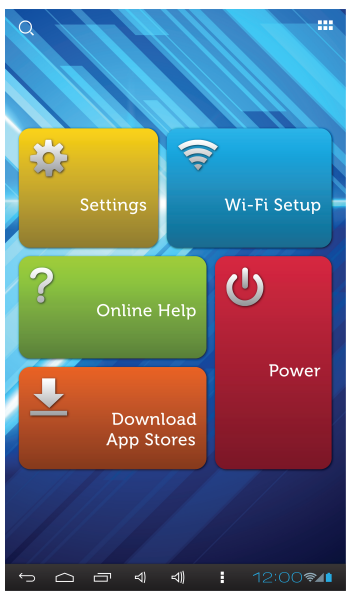
QUICK START GUIDE



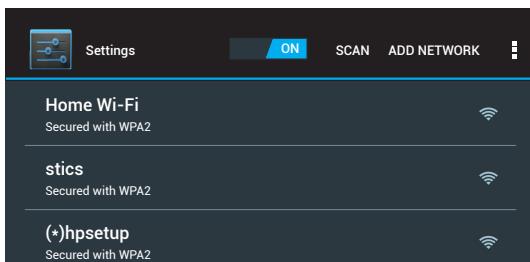
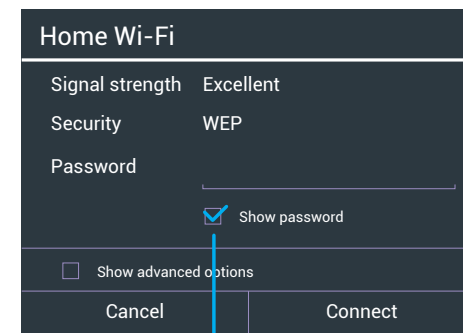
Polaroid Settings widget




Swipe the screen left



Home screen (right)
Polaroid Settings widget

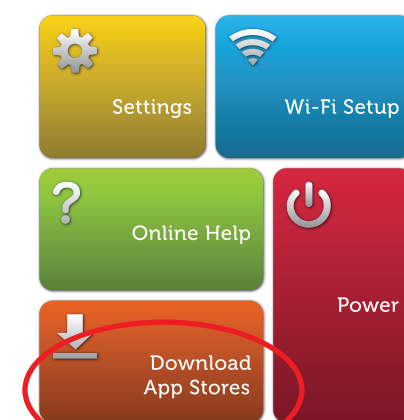
Select "Show password" to avoid mistakes.



To conserve battery life, turn off Wi-Fi when not connected to a network.

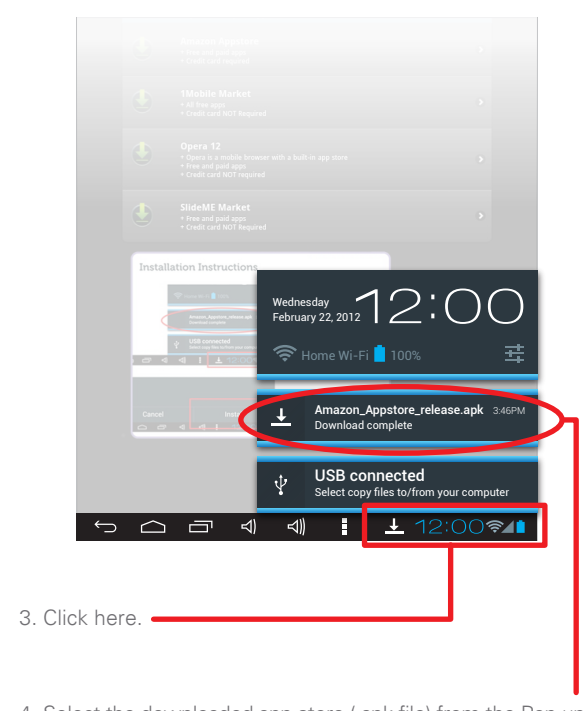
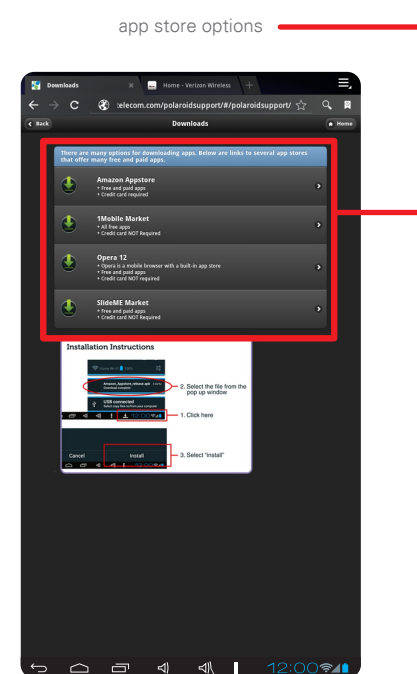
Downloading an App Store
To access a large library of free/paid apps and games, you need to download an app store. We have provided links to several app stores that can be easily accessed by selecting the "Download App Stores" option on the Settings widget.

1. After successfully connecting the tablet to Wi-Fi, select "Download App Stores" on the Polaroid Settings widget.



Polaroid Settings widget

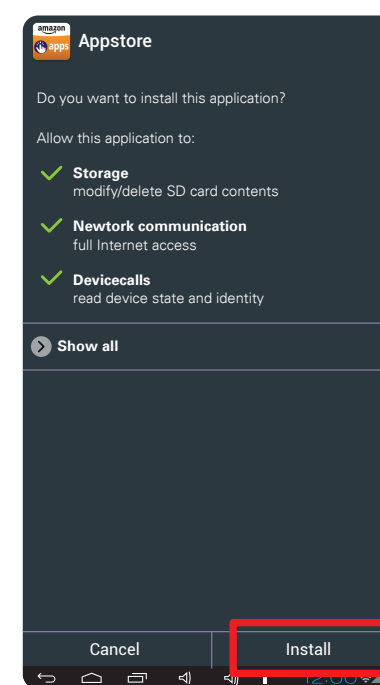
2. Select an app store, and follow the instructions to download and install it on the tablet.



3. Click here.

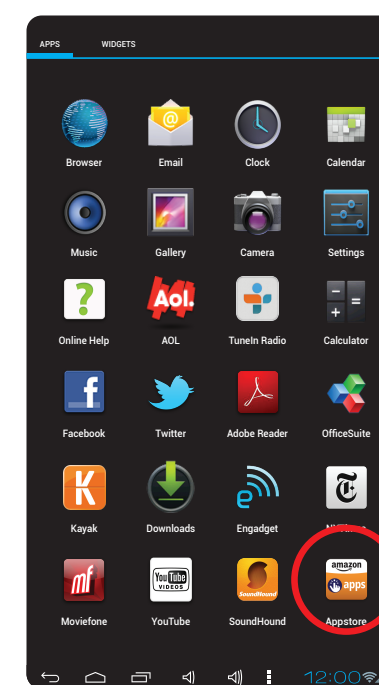
4. Select the downloaded app store (.apk file) from the Pop-up window.

5. Select "Install" to install the app.



Install screen

6. The app store appears on the Apps screen.



Apps screen